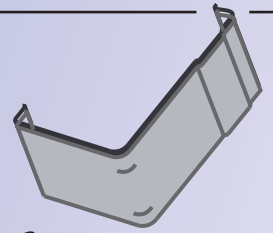


# QUICK-CRATE®



*The tightest box in the business*

## One - Way Shipping Crates



- **Constructed with a plywood base panel & OSB sides and top**
- **Costs 20-40% less than reusable Quick-Crates**
- **Set-up or knocked-down by one person in 2-3 minutes without screws, nails or steel banding**
- **Strength characteristics similar to Quick-Crate's heavy duty reusable systems**
- **Meets/exceeds import/export ISPM 15 certifications**
- **All machining operations performed by high-speed computer controlled machinery to ensure exact tolerances**

**League Manufacturing** has been making shipping crates since the 1920's. Our one-way Quick-Crate offers a cost effective alternative when return cycling is not feasible. We have designed our pricing to be highly competitive with thin-walled plywood shipping crates and traditional cleated crates. Our 3 on-site CNC routers allow us to quickly turn over high volume custom size orders with no problem. Also, ask about our 8 standard sized Quick-Crates we have on hand at all times. Give us a call to see what we can do for you.



[www.quickcrate.com](http://www.quickcrate.com)

608 Furman Road Greenville, SC 29609

Fraser League @ 800.362.4569

fraser@leaguemfg.com